



Model 356A71

Product Type: Accelerometer, Vibration Sensor
 Triaxial, miniature (23 gm) charge output accel., 10 pC/g, 5k Hz, (3) 10-32 conn.

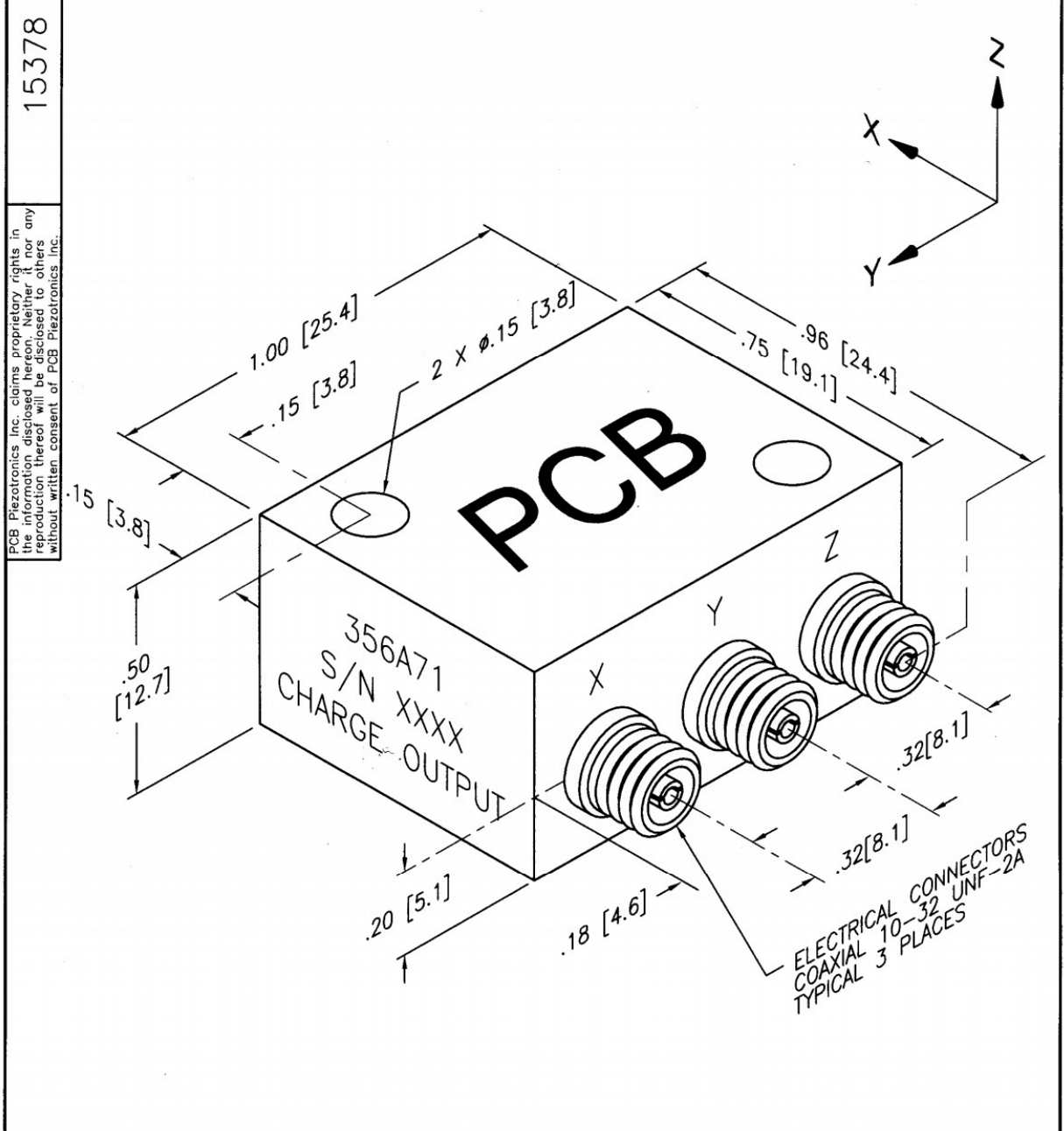
PERFORMANCE	ENGLISH	SI
Sensitivity(± 30 %)	10 pC/g	1.02 pC/(m/s ²)
Measurement Range	± 500 g pk	± 4905 m/s ² pk
Frequency Range(+5 %)	5 kHz	5 kHz [2]
Frequency Range(+10 %)	7 kHz	7 kHz [2]
Resonant Frequency	≥ 25 kHz	≥ 25 kHz
Non-Linearity	≤ 1 %	≤ 1 % [3]
Transverse Sensitivity	≤ 5 %	≤ 5 %
ENVIRONMENTAL		
Overload Limit(Shock)	± 5000 g pk	± 49,000 m/s ² pk
Temperature Range	-95 to +490 °F	-70 to +254 °C
Temperature Response	See Graph	See Graph [1]
ELECTRICAL		
Capacitance	690 pF	690 pF [1]
Insulation Resistance(at 70 °F [21 °C])	>10 ¹² ohm	>10 ¹² ohm
Insulation Resistance(at 490 °F [254 °C])	>10 ⁸ ohm	>10 ⁸ ohm [1]
Output Polarity	Negative	Negative
PHYSICAL		
Sensing Element	Ceramic	Ceramic
Sensing Geometry	Shear	Shear
Housing Material	Titanium	Titanium
Sealing	Hermetic	Hermetic
Size (Length x Width x Height)	0.96 in x 1.00 in x 0.50 in	24.4 mm x 25.4 mm x 12.7 mm
Weight	0.8 oz	22.7 gm [1]
Electrical Connector	10-32 Coaxial Jack	10-32 Coaxial Jack
Mounting	Through Hole	Through Hole
Mounting Torque	8 to 10 in-lb	90 to 113 N-cm
SUPPLIED ACCESSORIES:		
Model 039A22 Allen wrench, 7/64" hex (1)		
Model 080A170 Adhesive mounting base (for Model 356A71) (1)		
Model 080A90 Quick Bonding Gel (1)		
Model 081A94 Mounting stud, 6-32 UNC, 0.75" long (2)		
OPTIONAL VERSIONS		
M- Metric Mount		
Supplied Accessory : Model M039A22 Allen wrench for use with M3 thread (1) replaces Model 039A22		
Supplied Accessory : Model M080A170 Adhesive mounting base (1) replaces Model 080A170		
Supplied Accessory : Model M081A94 Mounting Stud, M3 X 0.50 X 20mm (2) replaces Model 081A94		
P- Positive Output Polarity		

All specifications are at room temperature unless otherwise specified.

NOTES:

- [1] Typical.
- [2] Low frequency response is determined by external signal conditioning electronics.
- [3] Zero-based, least-squares, straight line method.

APPLICATION			REVISIONS				
NEXT ASS'Y	USED ON	VAR	REV	DESCRIPTION	ECN	DATE	APP'D
			A	ADDED DIRECTIONAL AXES	17133	3/14/03	gms/zw

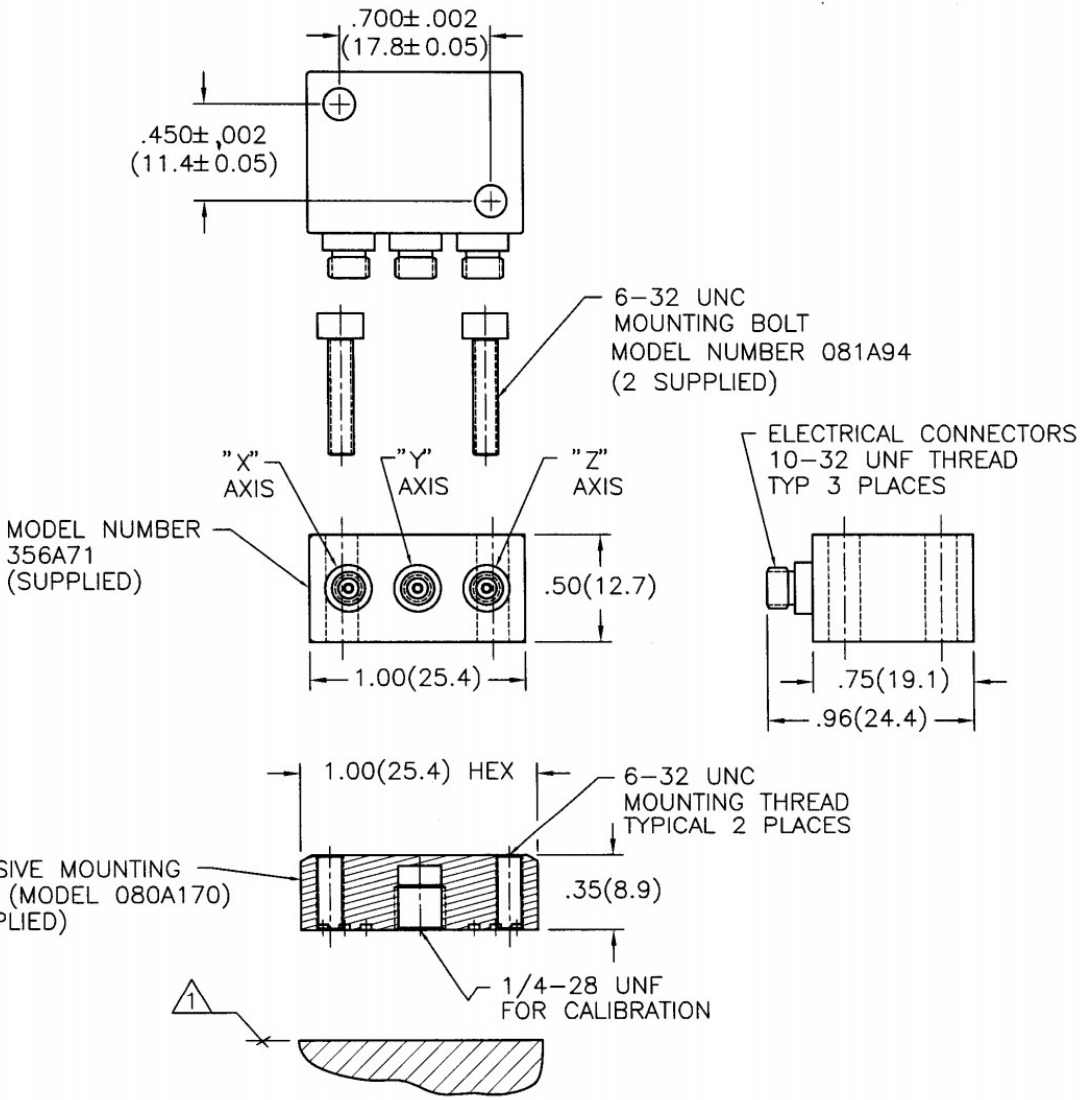


UNLESS SPECIFIED TOLERANCES		DRAWN		MFG		PCB PIEZOTRONICS	
DIMENSIONS IN INCHES	DIMENSIONS IN MILLIMETERS [IN BRACKETS]	gms	3/14/03	AL	3/17/03	3425 WALDEN AVE. DEPEW, NY 14043 (716) 684-0001 EMAIL: SALES@PCB.COM	
DECIMALS XX ±.01	DECIMALS X ±0.3	CHK'D	DM	ENGR	MB	CODE	DWG. NO.
XXX ±.005	XX ±0.13	APP'D	gms	SALES	WZ	IDENT. NO.	15378
ANGLES ±2 DEGREES	ANGLES ±2 DEGREES	TITLE				52681	
FILLETS AND RADII .003 - .005	FILLETS AND RADII [0.07 - 0.13]	OUTLINE DRAWING MODEL 356A71 ACCELEROMETER				SCALE: 3X	SHEET 1 OF 1
DD011 REV. C 01/21/03							

15627

PCB Piezotronics Inc. claims proprietary rights in the information disclosed hereon. Neither it nor any reproduction thereof will be disclosed to others without written consent of PCB Piezotronics Inc.

APPLICATION			REVISIONS				
NEXT ASS'Y	USED ON	VAR	REV	DESCRIPTION	ECN	DATE	APP'D



- 3.) FOR SEMI-PERMANENT MOUNTING USE QUICK BONDER (080A90) OR EQUIVALENT.
- 2.) FOR TEMPORARY MOUNTING APPLICATIONS, USE PETRO WAX (MODEL 080A109).
- △ RECOMMENDED MOUNTING SURFACE SHOULD BE FLAT TO WITHIN 0.003 TIR OVER Ø1.25 WITH A 32/ FINISH FOR BEST RESULTS.

UNLESS SPECIFIED TOLERANCES		DRAWN		MFG		PCB PIEZOTRONICS	
DIMENSIONS IN INCHES	DIMENSIONS IN MILLIMETERS (IN PARENTHESIS)	SKZ	2/15/01	Q	2-15-01	3425 WALDEN AVE. DEPEW, NY 14043 (716) 684-0001 EMAIL: SALES@PCB.COM	
DECIMALS XX ±.01	DECIMALS XX ±0.3	CHK'D	2/15/01	ENGR	1/3	2/15/01	CODE IDENT. NO. 52681
XXX ±.005	XXX ±0.13	APP'D	2/15/01	GA	2/15/01	DWG. NO. 15627	
ANGLES ±2 DEGREES	ANGLES ±2 DEGREES	TITLE				SCALE: .75X	
FILLET AND RADII .003 - .005	FILLET AND RADII (0.07 - 0.13)	INSTALLATION DRAWING MODEL 356A71 ACCELEROMETER				SHEET 1 OF 1	
DD011 REV. B 03/13/98							